

We Need Your Help to Protect Cherry Creek and the Reservoir!

Where:

Cherry Creek State Park (CCSP, see Figure 1) and Cherry Creek Reservoir serve as an oasis for the Denver metro area and Colorado Front Range. CCSP is in Arapahoe County, surrounded by Denver, Greenwood Village, Aurora, and Centennial. CCSP sees over 2 million park visitors annually that enjoy the natural resources and recreation provided by Cherry Creek and the Reservoir.

Who:

The Cherry Creek Basin Water Quality Authority (CCBWQA) and Colorado Parks and Wildlife (CPW) are working to protect the water quality in Cherry Creek and the Reservoir. For more, see <https://www.cherrycreekbasin.org/>.

Issue:

Severe erosion (see photos 1 and 2) is occurring in Cherry Creek in CCSP and in Piney Creek immediately upstream. The erosion is threatening the surrounding environment, wildlife corridors, critical infrastructure, and water quality. Additionally, downed trees could become debris in a large flood event potentially impacting the flood control purpose of the Reservoir.

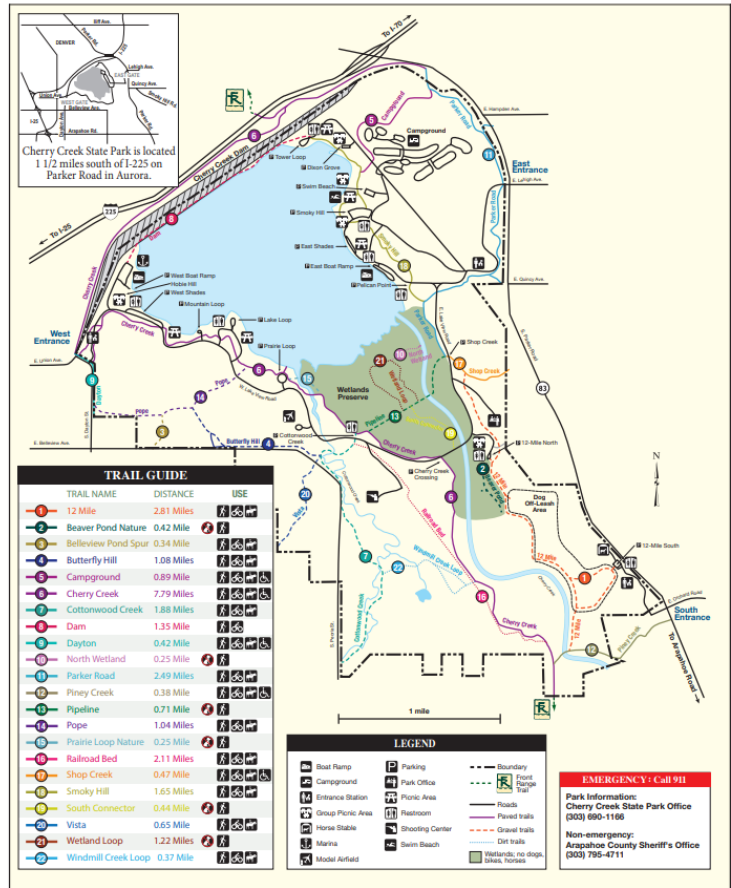


Figure 1 - Cherry Creek State Park



Photo 1 – Cherry Creek in CCSP



Photo 2 – Cherry Creek upstream of CCSP



We Need Your Help to Protect Cherry Creek and the Reservoir!

Background:

Muller Engineering Company recently completed a stream channel and water quality assessment on Cherry and Piney Creeks (see Figure 2) for CCBWQA that identified serious issues requiring a major capital investment to repair. Key findings include:

- erosion in the lower reach of Cherry Creek is estimated to contribute over 1,700 pounds of phosphorus per year, which can contribute to harmful algal blooms in the reservoir,
- initial estimate of channel reclamation cost is over \$23 million within the park and an additional \$10 million upstream of the park, which exceeds the combined resources of CCBWQA and Cherry Creek State Park. A more detailed alternatives evaluation is being completed to identify a phased approach to the project and to refine project costs, and
- risks of inaction include continued erosion, environmental impacts, loss of wildlife habitat and natural resources, risk to infrastructure including a water supply pipeline and roads, significant on-going phosphorus and sediment loading to the Reservoir, and increased damages when flooding occurs.

Our Request:

Because of the high capital cost needed to complete these repairs in a timely manner, CCBWQA and CPW are seeking funding partners to support stream reclamation similar to the example shown in Photos 3 and 4 in Chatfield State Park. In 2023, CCBWQA is preparing an alternatives analysis that will result in a refined plan for reclamation and a refined cost estimate. We are currently identifying partners who may be able to help fund this high priority project.



Photo 3 – Example of Similar Degraded in Plum Creek in Chatfield State Park Prior to Stabilization

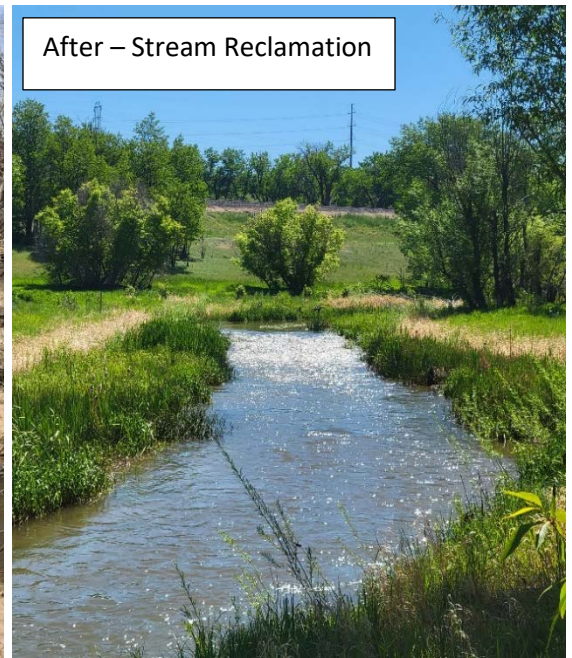
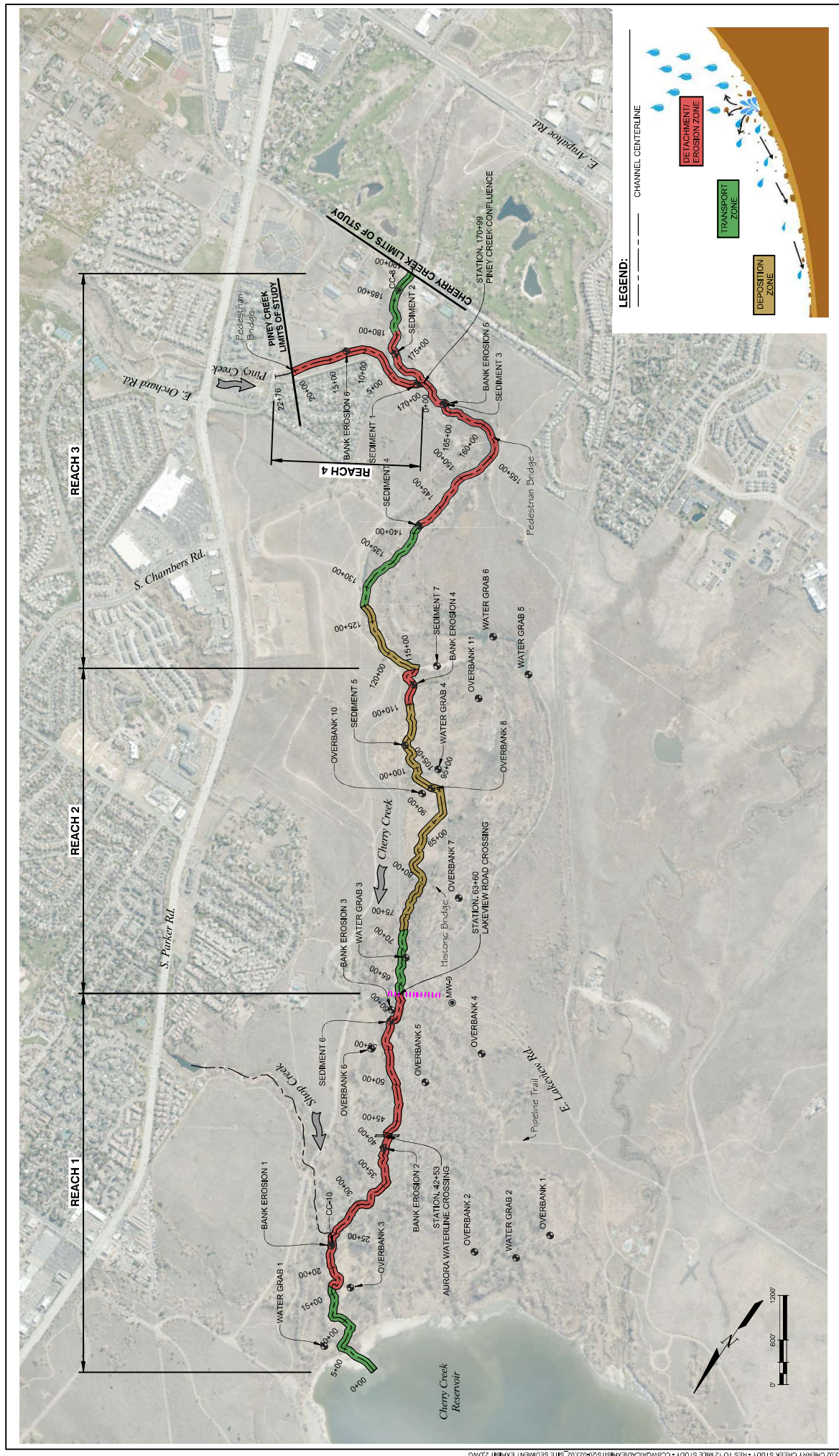


Photo 4 – Example Reclaimed Channel of Plum Creek in Chatfield State Park





**CHERRY CREEK RESERVOIR TO 12 MILE
GEOMORPHIC SUMMARY**

FIGURE 2

DATE 5/20/2021	DRAWING NO.
SHEET NO. 1 OF 1	

